



SCHRADERGROUP

An aerial photograph of Knapp Elementary School, showing the school building, a parking lot, and surrounding residential and green areas.

NORTH PENN SCHOOL DISTRICT Knapp Elementary School

FACILITY FORUM

Knapp Elementary School Renovations & Addition

09 April 2019



KNAPP ES ASSESSMENT HIGHLIGHTS



NORTH PENN SCHOOL DISTRICT



KNAPP ES ASSESSMENT HIGHLIGHTS

SITE

- ADA upgrades
- Paving failure
- Drainage to correct ponding water
- Repair concrete curbing and sidewalks
- Create secondary access drive to site

ELECTRICAL AND LIGHTING

- Replace all lighting interior & exterior
- Replace most of the power distribution system (switchboards and panelboards)
- Add second transfer switch and new full building generator

BUILDING

- ADA upgrades
- Roofing repair – flashing systems
- Windows and doors to be replaced
- Masonry joint sealants to be replaced
- Interior finishes to be replaced
- Security vestibule and office sequence

HVAC

- Replace much of the HVAC equipment
- Hot water plant and boilers to be replaced
- Provide air-conditioning & dehumidification throughout building
- Replace HVAC controls system with fully integrated District-wide DDC system



KNAPP ES ASSESSMENT HIGHLIGHTS

PLUMBING & FIRE PROTECTION

- Replace all plumbing fixtures with ADA compliant water saving devices
- Upgrade plumbing drainage systems
- Verify Lead Free requirements for potable water plumbing systems.
- Provide high efficiency gas-fired water heaters.
- Provide a sprinkler fire protection system.

SAFETY & SECURITY

- Increase CCTV quantities with night vision
- Replace fire alarm system
- Replace all safety and security devices

TECHNOLOGY

- Replace data cabling system
- Update all AV technology
- Replace technology systems

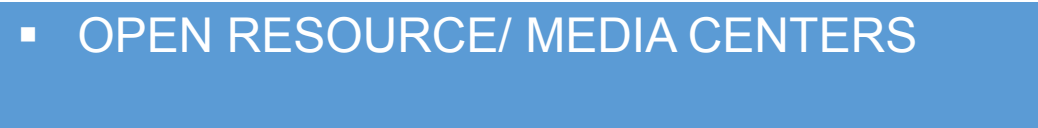
21st CENTURY LEARNING

LEARNING TYPE

- TRADITIONAL INSTRUCTION
- ONE-ON-ONE
- RESEARCH/ INVESTIGATE
- MAKE/ DEVELOP
- PRESENT/ REPORT OUT
- COMMUNITY/ INTERNAL COMMUNITY

SPACE TYPE

- MULTIPLE SIZED INSTRUCTIONAL SPACE
- SMALL GROUP WORK SPACES
- OPEN RESOURCE/ MEDIA CENTERS
- LARGE GROUP PROJECT AREAS
- PRESENTATION AREAS
- FULL-SIZED ACTIVITY AREAS



21st CENTURY LEARNING

- A**
- B**
- C**
- D**
- E**
- F**

MULTIPLE SIZED INSTRUCTIONAL SPACE

SMALL GROUP WORK SPACES

OPEN RESOURCE/ MEDIA CENTERS

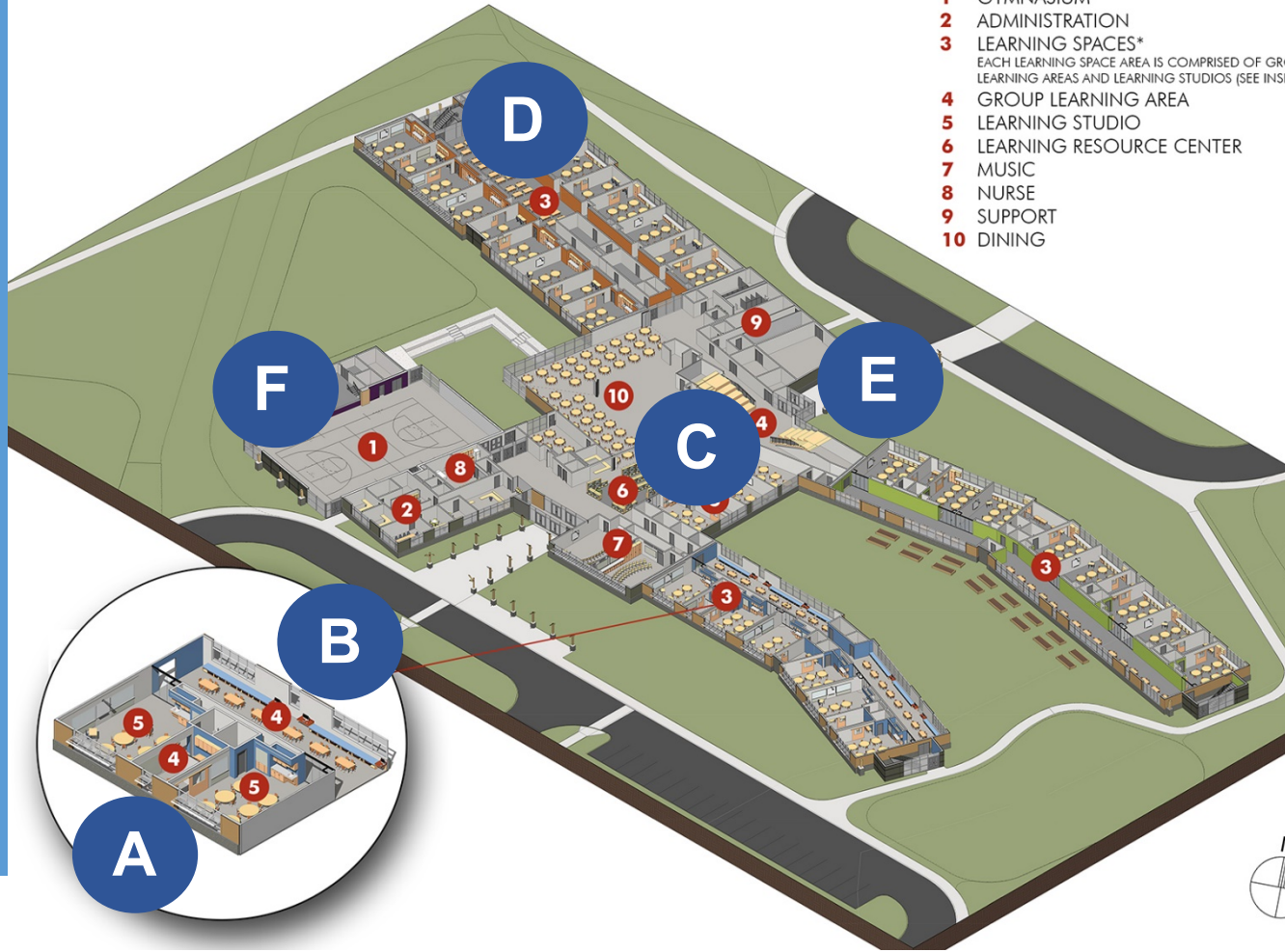
LARGE GROUP PROJECT AREAS

PRESENTATION AREAS

FULL-SIZED ACTIVITY AREAS

FIRST FLOOR

- 1** GYMNASIUM
- 2** ADMINISTRATION
- 3** LEARNING SPACES*
EACH LEARNING SPACE AREA IS COMPRISED OF GROUP LEARNING AREAS AND LEARNING STUDIOS (SEE INSET)
- 4** GROUP LEARNING AREA
- 5** LEARNING STUDIO
- 6** LEARNING RESOURCE CENTER
- 7** MUSIC
- 8** NURSE
- 9** SUPPORT
- 10** DINING

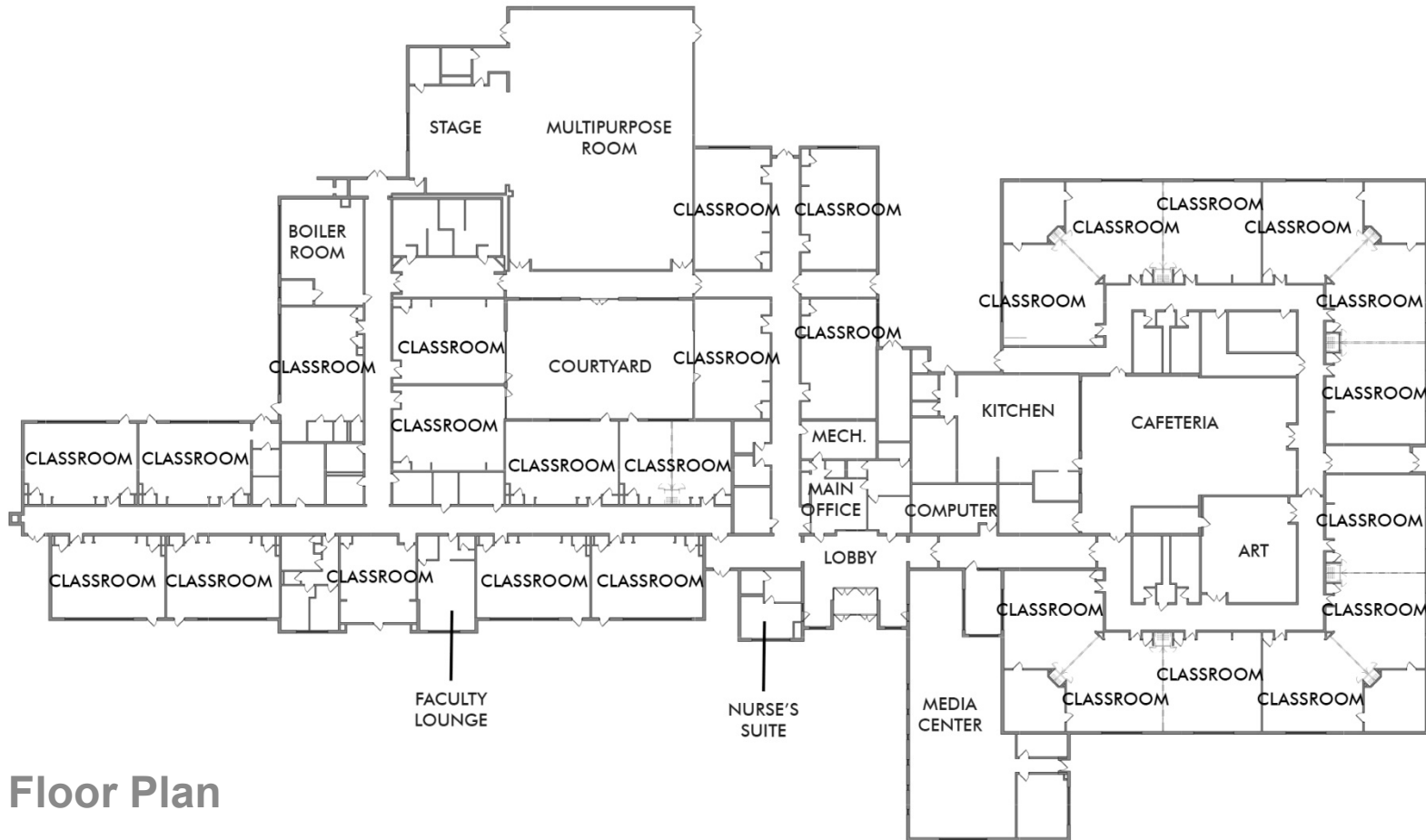


changing learning environments

example spaces – elementary school



KNAPP ES EXISTING PLAN



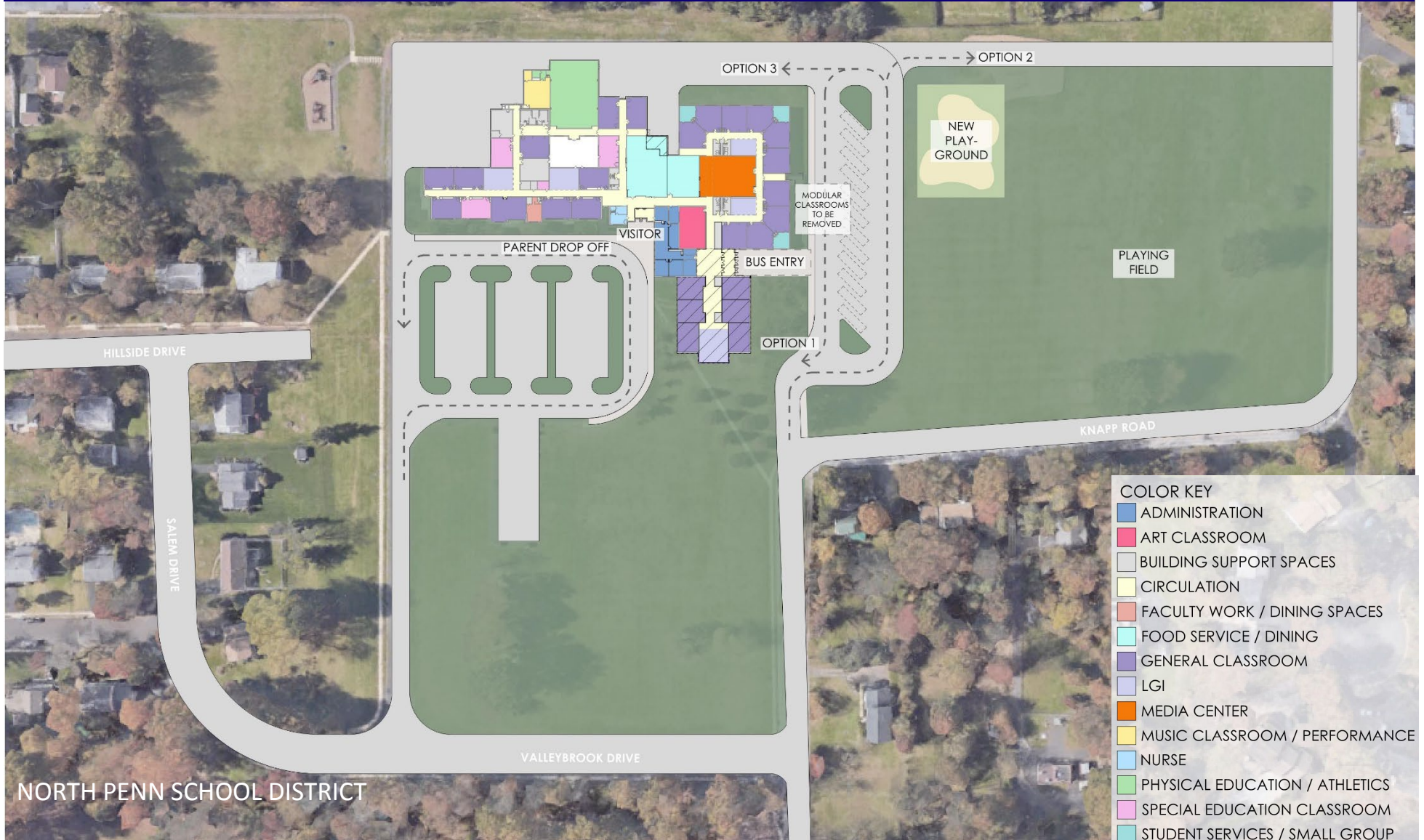
Floor Plan

KNAPP ES EXISTING SITE PLAN



Site Plan

OPTION #1 Concept Site Diagram



OPTION #2 Concept Site Diagram



COLOR KEY

Blue	ADMINISTRATION
Red	ART CLASSROOM
Grey	BUILDING SUPPORT SPACES
Yellow	CIRCULATION
Orange	FACULTY WORK / DINING SPACES
Cyan	FOOD SERVICE / DINING
Purple	GENERAL CLASSROOM
Light Purple	LGI
Dark Orange	MEDIA CENTER
Light Yellow	MUSIC CLASSROOM / PERFORMANCE
Light Blue	NURSE
Light Green	PHYSICAL EDUCATION / ATHLETICS
Pink	SPECIAL EDUCATION CLASSROOM
Light Cyan	STUDENT SERVICES / SMALL GROUP



KNAPP ES CONCEPTUAL BUDGET

Renovations & 6 CR Addition

(modular replacement plus classrooms lost to right-sizing)

Concept Budget Estimate

\$ 24-26 Million

** Estimate to the midpoint of construction in 2021*



PROPOSED SCHEDULE

PHASE	TIMELINE
DESIGN PROCESS	March 2019 – Feb 2020
PERMITTING PROCESS	April 2019 – Feb 2020
BIDDING PROCESS	Feb 2020 – April 2020
CONSTRUCTION – NEW	April 2020 – Dec 2020
CONSTRUCTION – PHASED RENOVATIONS	Jan 2020 – July 2022
COMPLETE SITE CONSTRUCTION	Jun 2022 – Aug 2022